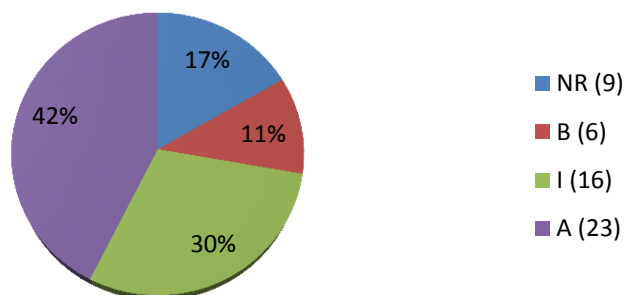
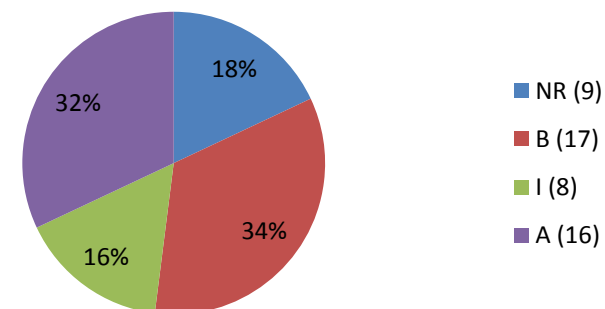


PROVE COMUNI A.S. 2018/2019 LATINO

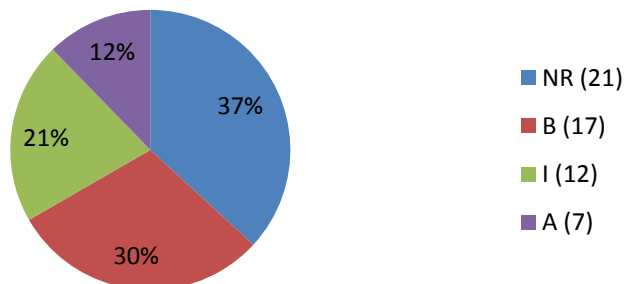
LATINO PRIME CLASSICO
54/55



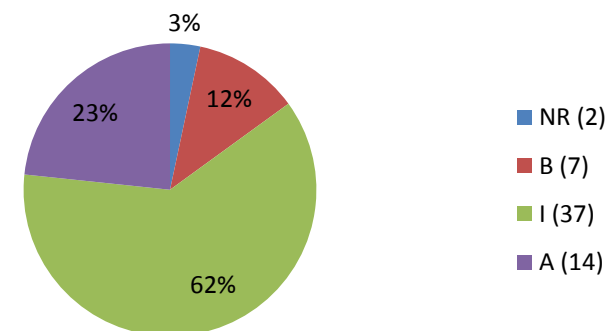
LATINO SECONDE CLASSICO
50/55

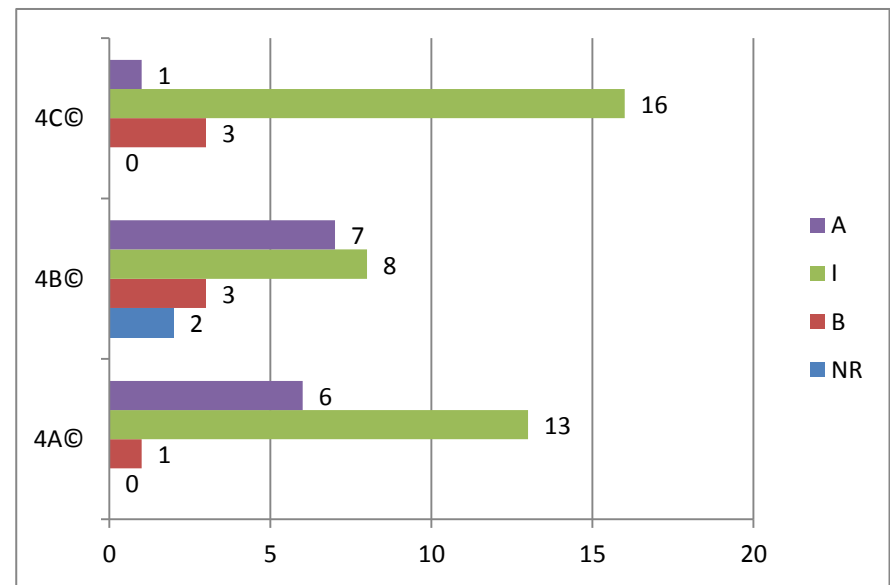
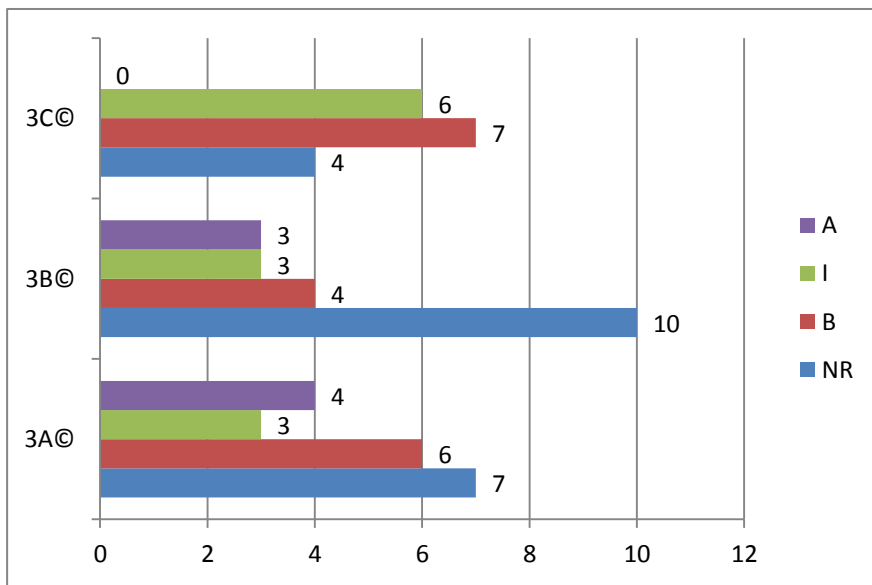
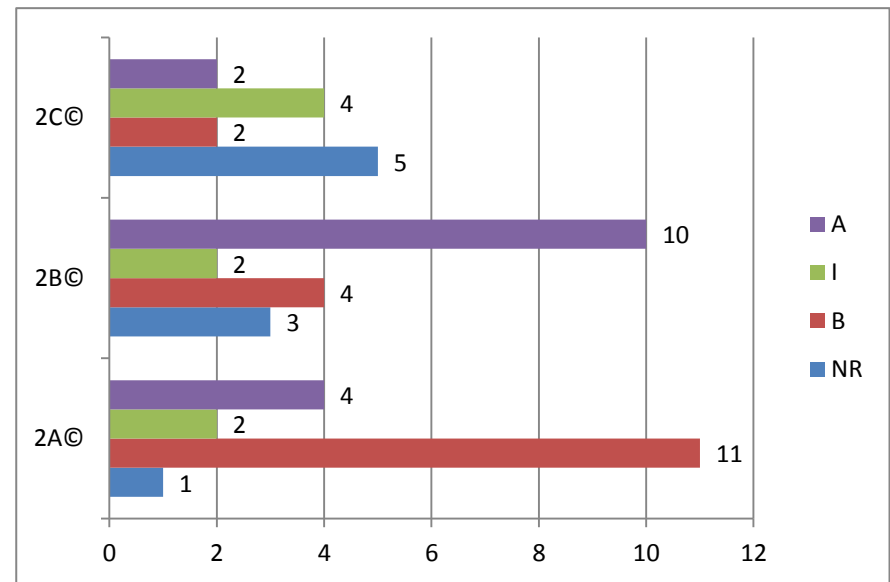
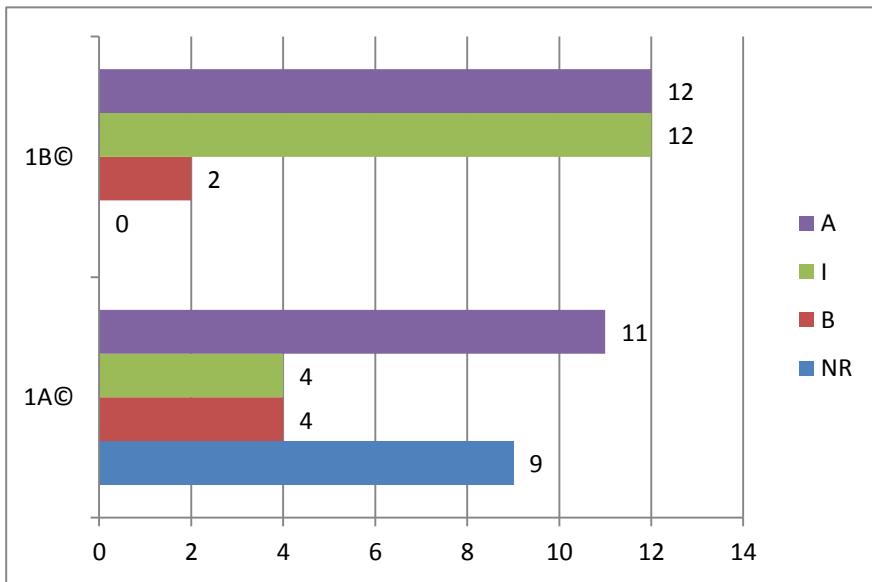


LATINO TERZE CLASSICO
57/59



LATINO QUARTE CLASSICO
60/60





PROVE COMUNI LATINO PER ANNO CLASSICO

